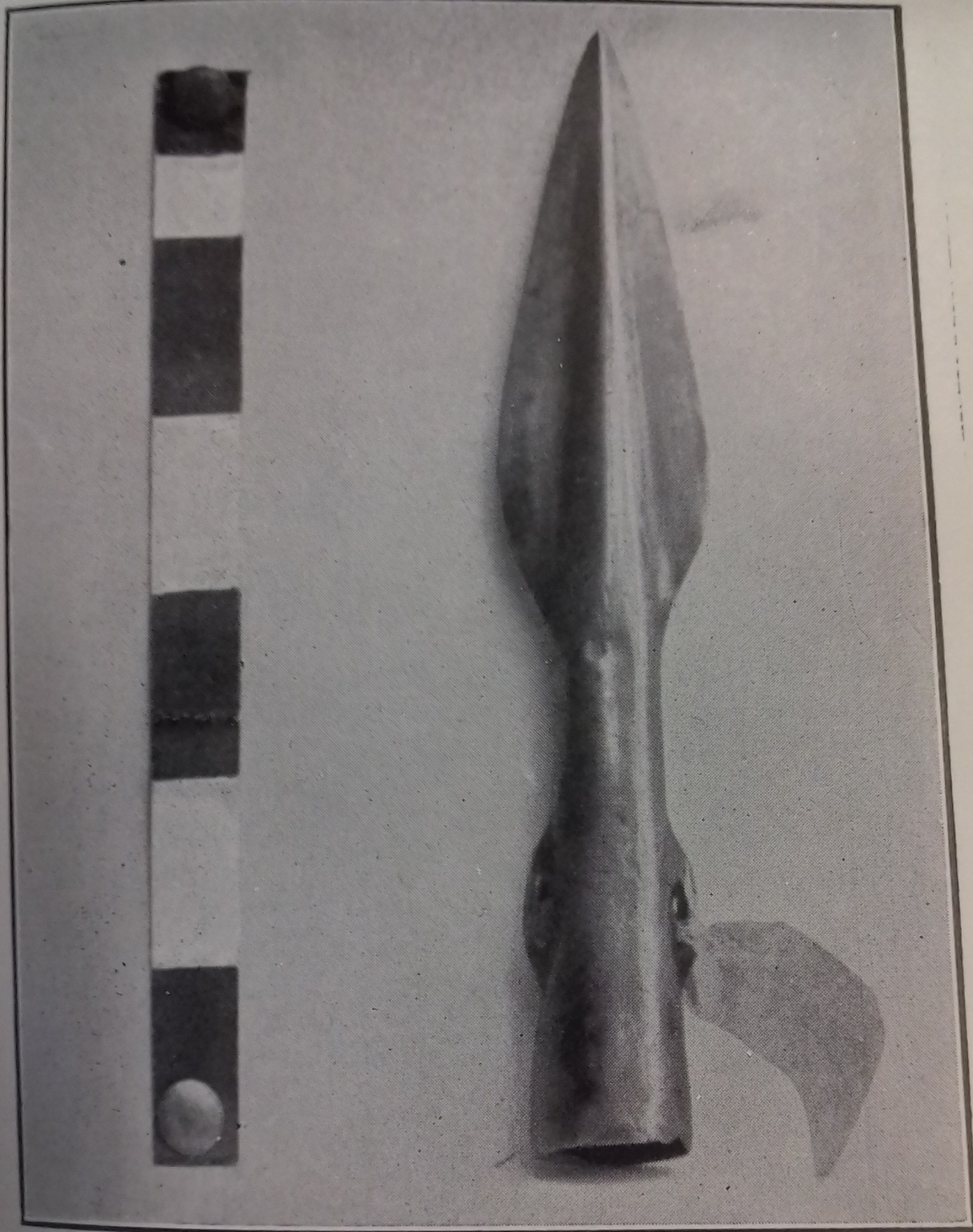


The following on the bronze age spear-head found in the moat at Petton is taken from an article by Lily F Chitty in the Transactions of the Shropshire Archaeological and Historical Society. Ser 4, Vol XI. 1927/ 1928.



Bronze Spear-head (Class IV.) found in Petton Moat.
(*Shrewsbury Museum*).
(*Photograph by R. L. Bartlett, Shrewsbury*) .

IV.

BRONZE SPEAR-HEAD FROM PETTON.

Among the many treasures in the possession of the late Mrs. Ellis Cunliffe at Petton Park was a remarkably beautiful bronze spear-head found in Petton Moat when it was cleaned out in 1825. It is a perfect specimen of the Class IV type¹, 160 mm. in length, with an elegant leaf-shaped blade, bevelled edges and point, and loops half-way down the socket: it is of thin, light metal, dull golden in colour with vestiges of black patina (suggesting burial in peat): the edges are sharp and almost undamaged: it weighs $3\frac{3}{4}$ oz.

Mr. Harold J. E. Peake, F.S.A., states that "it may safely be said to date from a time prior to the introduction of the leaf-shaped sword (Type E.) into this country, though probably by no great period of time; spear-heads of this type might well, in fact, have been still in use when the Sword-Folk landed. Several such spear-heads have been found in Cheshire, two of them in the Frodsham Marshes during the construction of the Manchester Ship Canal. It may turn out that their distribution was mainly in the western counties, though some specimens have been found as far east as East Anglia." A note in the

1. Greenwell and Parker Brewis, "The Evolution of the Bronze Spear-head in Britain," *Archaeologia*, LXI, 439-472.

Antiquaries Journal, October 1926², referring to a similar lance-head, found in association with bronze loops, an amber bead and coils of bronze wire, at Park Brow, in Sussex, suggests that the type is of Irish origin, and spread to England and Scotland about the middle of the Bronze Age. In Shropshire, another specimen was found in the ruins of the Red Castle, Hawkstone, probably in a hoard containing palstaves and socketed celts, but its history is indefinite. Blades which seem to belong to the same type have come to light near the Day House, Cherrington³, and at Castle Bryn Amlwg⁴.

The Petton Lance-head was lent to the Exhibition of Local Antiquities in 1898⁵, and was recorded in the *Victoria County History*, I, 203. I made a drawing of it for the Bronze Age Index of the British Association in 1923. In the sale held at Petton Park in October, 1926, it was saved for Shropshire by the Rev. Walter Peppercorn, Vicar of Cockshutt and Petton, who has most generously presented it to Shrewsbury Museum, where it forms the sole example of the type and is a most valuable asset to the collection. Our Chairman, Mr. T. E. Pickering, has kindly provided the photograph of the weapon.

LILY F. CHITTY.